



**MSA**  
*The Safety Company*

**BRISTOL**

Structural Firefighting - NFPA

---

WHEN YOU GO IN, WE GO IN WITH YOU.

## XFlex

### NFPA

The XFlex design has been developed and will also meet NFPA 2013. The ergonomic design gives the ultimate in fit and comfort for the maximum number of body types. XFlex has distinctive sports styling and is available in fabric combinations that are suitable for the various hazardous roles associated with a fire-fighter's work.

The NFPA XFlex suits are available in the following fabric combinations:

Outer: Hainsworth TITAN1220 or PBI Matrix®.

Moisture Barrier: Crosstech® Black.

Inner Lining: Thermal Barrier quilted to a Nomex® filament lining which wicks the sweat away from the body and also is "slippery" for ease when putting the garments on and taking them off.

In addition, the XFlex suits manufactured from:

Outer: Hainsworth TITAN1220.

Moisture Barrier: Crosstech® Black.

Inner Lining: Thermal Barrier quilted to a Nomex® filament lining.

The NFPA XFlex suits are also certified to EN469: 2005.

### Coat

#### Silhouette

- Tapered body shape
- Hem curved up at front and down at back – comfort and protection
- Shoulder shape and under arm gussets allow for full rotational arm movement
- Shoulder yoke shaped for comfort, especially with breathing apparatus
- Angled and curved style lines, emphasised shaping

#### Style Features

- Bristol designed Drag Rescue Device (DRD)
- Double zip flap extends to neck with internal zip guard to protect throat
- Deep return on cuff hem ensures gloves fit well inside sleeve
- Large landscape side pockets with shaped flaps
- Vertical pocket under zip flap and pen pocket
- Large internal pocket with care and instruction label
- Ergonomic three dimensional articulated elbow
- Hem of sleeve curved over back of hand for additional protection
- Inspection zip

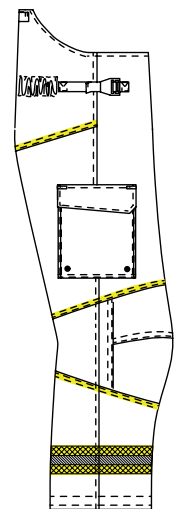
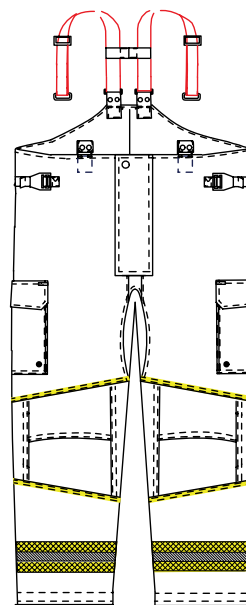
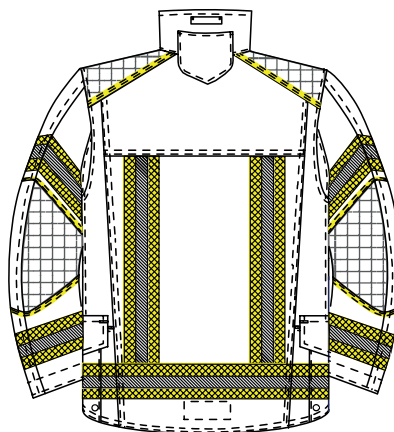
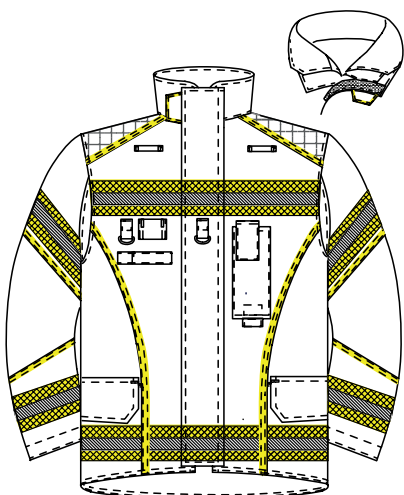
### Trouser

#### Silhouette

- Natural waistline at front with high curved back
- Centrally placed zip fly allows tapering of top of trouser, giving a superior fit and making it easier to put on.
- Distinctive angled and shaped seam lines

#### Style Features

- Detachable H Braces with unique webbing slide adjuster
- Large twin pleated cargo pockets with shaped pocket flap, large internal patch pocket with care and instruction label
- Inside hem lined with Neoprene to minimise abrasion from boots
- Fully articulated 3 dimensional ergonomic knee shaping which goes through all layers. Very flexible reinforcement fabric used
- Two side waist adjusters





## North American style - NFPA

### Standard NFPA 1971

Based on the Ergotech model, Bristol manufactures firefighter garments which meet the North American standard NFPA. They are tested independently by Underwriters Laboratories Inc. (UL), who carry out rigorous testing on all materials, components and garments.

Not surprisingly, Bristol was the first company to have sold NFPA type garments, manufactured in the UK from European fabrics, into the United States market.

#### Coat NE/A

##### Features

- Bristol design Drag Rescue Device (DRD)
- Underarm gussets
- Flip back throat tab
- Articulated sleeves
- Action pleats on back
- Elbow and shoulder pads
- Two lower box bellow pockets with flaps, pull tabs and drainholes, handwarmer pockets behind
- One inside patch pocket on lining
- Two vertical jetted pockets under front flap
- Radio pocket
- Two microphone loops
- Two D rings on front
- Torch loop
- 75mm triple trim reflective tape

#### Trouser TNE/A

##### Features

- Two box bellow pockets with flaps, pull tabs and drainholes
- Zip fly with hook and loop flap
- Detachable 'H' braces
- Articulated knees with Arashield centre panel
- High back
- One inside hip patch pocket
- 75mm triple trim reflective tape
- Two side waist adjusters and elasticsation at back

##### Sizes

- **Coat:** 34" - 60"
- **Trousers:** 30" - 60"
- **Height fittings:** short/regular/tall/extra tall



## ABOUT

# MSA – THE SAFETY COMPANY

Established in 1914, MSA Safety Incorporated is the global leader in the development, manufacture and supply of safety products that protect people and facility infrastructures. Many MSA products integrate a combination of electronics, mechanical systems and advanced materials to protect users against hazardous or life-threatening situations. The company's comprehensive product line is used by workers around the world in a broad range of markets, including the oil, gas and petrochemical industry, the fire service, the construction industry, mining and the military. MSA's core products include self-contained breathing apparatus, fixed gas and flame detection systems, portable gas detection instruments, industrial head protection products, fire and rescue helmets, and fall protection devices.

Accompanying you in firefighting, emergency response and search and rescue, our Bristol line is one of the world's leading emergency services protective clothing brands, with history dating back to 1801.

## WHEN YOU GO IN, WE GO IN WITH YOU.